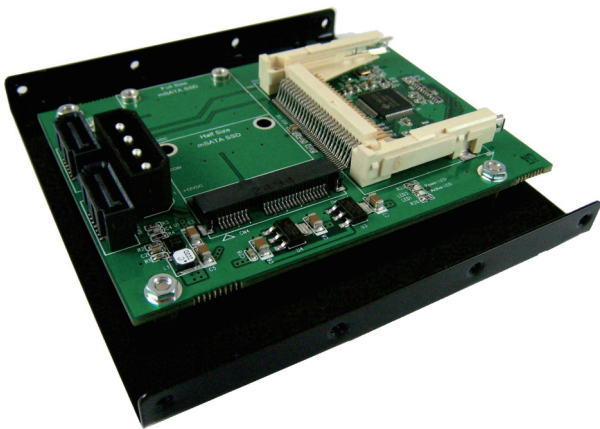


SATA III 轉mSATA & CF 卡 轉接卡



訂購資訊

產品型號	S2094E
產品描述	SATA III 轉 mSATA SSD & CF Card 轉接卡 + 3.5" 支架

規格

- 支援 SATA Reversion 3.2
- PCI Express Mini Card Electromechanical Spec. 1.2
- PWM synchronous buck converter Power IC
 - 提供最大電流3安培
 - 短路保護
 - 瞬間湧浪電流保護
 - 過熱關閉供電保護
 - 靜電保護 HBM (Human Body Mode)/2KV
- 符合Compliant with CF+ and CF Card Spec. Rev. 4.1
- 支援ATA/ATAPI-7 specification.
- ATA/ATAPI Ultra DMA Mode 0, 1, 2, 3, 4, 5.
- ATA/ATAPI PIO Mode 0, 1, 2, 3, 4.

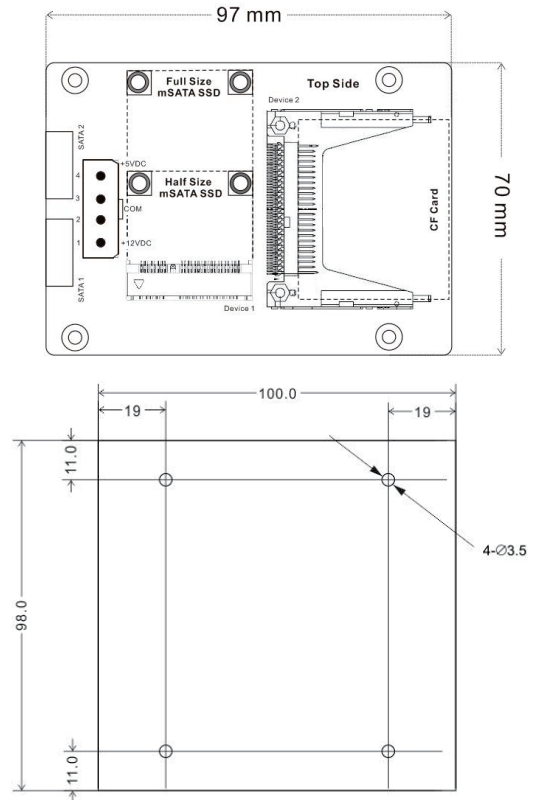
支援 mSATA SSD 規格大小

- Half size mSATA : 26.8(L) x 30(W) (mm)
- Full size mSATA : 50.95(L) x 30(W)

支援 CF Card 規格大小

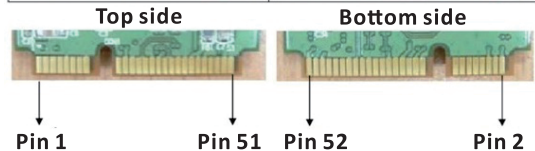
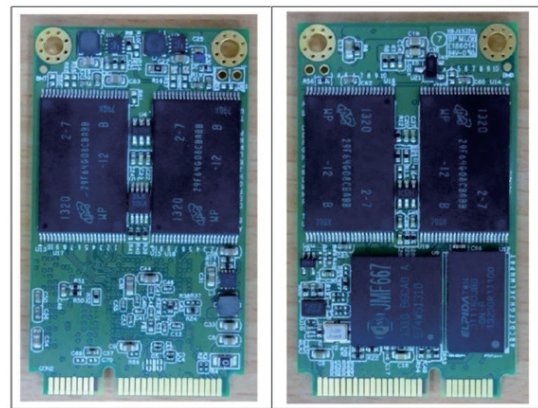
- Type 1 CF Card : 36.4(L) x 42.8(W) x 3.3 (H) (mm)
- Type 2 CF Card : 36.4(L) x 42.8(W) x 5(H)

外型尺寸 (單位:mm)

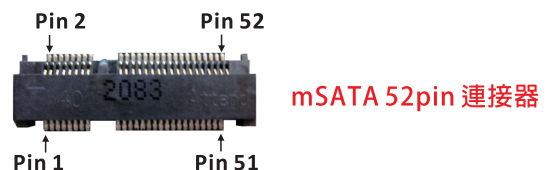


▲ 3.5" Frame Bracket

mSATA 52pin 金手指



Device connector : mSATA 52pin golden finger



mSATA 52pin 連接器